



TIMBER WINDOWS

The complete LISTED GUIDE

www.timberwindows.com



TIMBER
WINDOWS

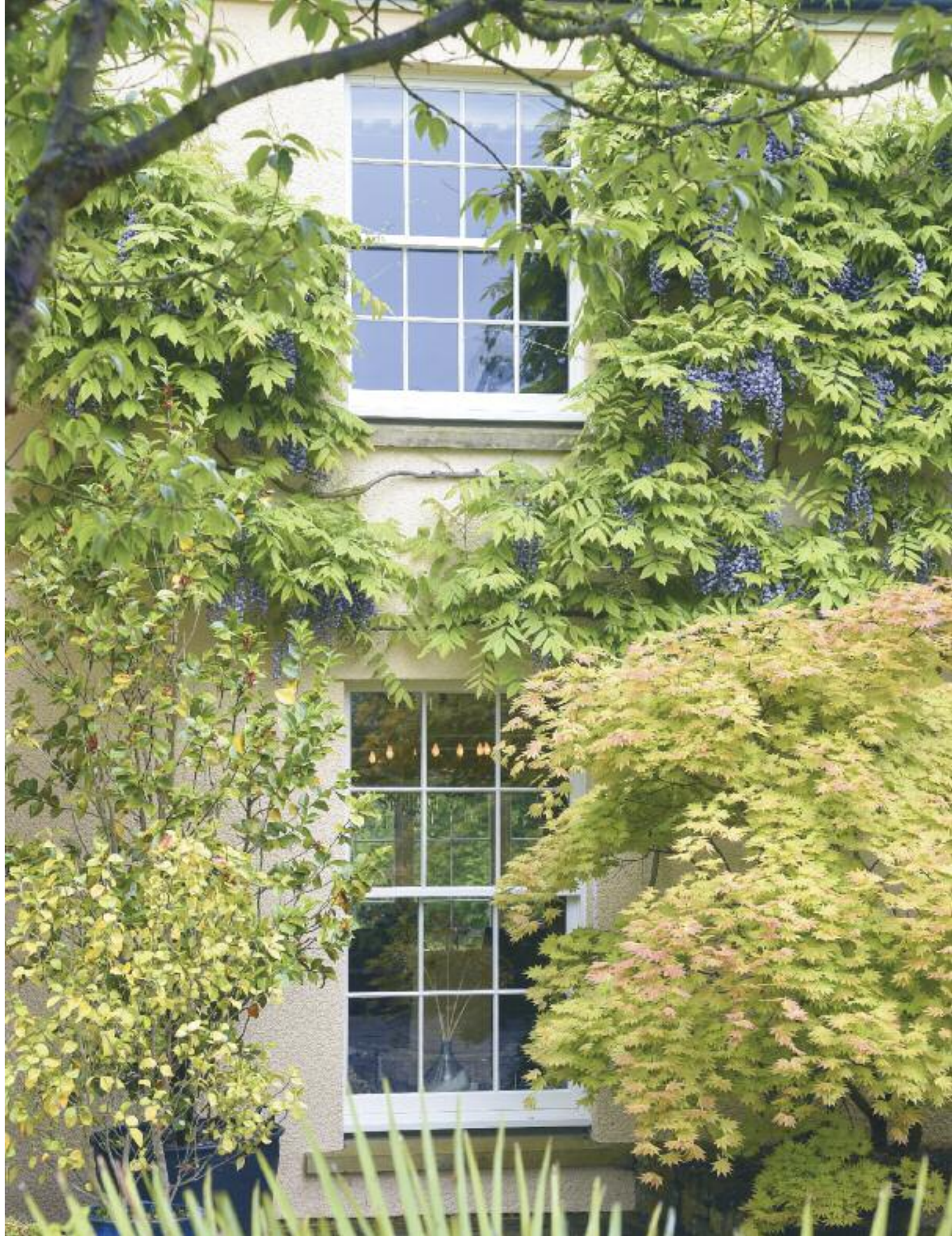
· LISTED ·

The complete

LISTED GUIDE

www.timberwindows.com





CONTENTS



All rights reserved. Except as allowed by law, no part of this publication may be reproduced in any form without written permission. As a result of progressive development, we reserve the right to modify or change specifications and descriptions without prior notice.

All photographs in this brochure are of installations completed by Timber Windows network of local installers.

All designs and colours in the brochure are intended as a guide only - we recommend you inspect physical samples at your local installer before purchase.



Please visit our website for further information

www.timberwindows.com

- 6** A PASSION FOR ARCHITECTURAL AUTHENTICITY
- 8** HELPING YOU ENHANCE & PRESERVE YOUR HERITAGE HOME
- 14** HISTORICAL PRESERVATION WITH MODERN STANDARDS
- 16** TIME HONOURED SKILLS - OLD MEETS NEW
- 22** WHY TIMBER WINDOWS LISTED...?
- 26** WE ARE EXPERT WINDOW MAKERS
- 30** GLAZING MATTERS
- 32** ELEGANTLY STYLED SASH WINDOWS
- 54** TRADITIONALLY STYLED CASEMENT WINDOWS
- 72** AUTHENTICALLY STYLED FRENCH DOORS
- 80** ENGINEERED TIMBER V TRADITIONAL WOOD
- 82** THE REASSURANCE OF DEALING WITH A LOCAL SPECIALIST
- 84** OUR SHOWROOM TEAMS ARE EXPERTS IN THE SPECIFICATION OF OUR WINDOWS & DOORS



A Passion for

ARCHITECTURAL AUTHENTICITY

Timber Windows Listed - a collection of specially designed windows and doors that have gained positive feedback and approval from planning authorities across the UK.

We have assisted homeowners with buildings from a host of historical periods to meet the planning, conservation and preservation rules for their particular area with authentically designed timber windows and doors.

Knowing and understanding these rules should always be your first step. The authorities assess on a case by case basis, considering the significance and circumstances of the changes that you wish to make. So for this reason it is always best to make an initial approach to your local planning authority.

Our aim is to provide timber windows and doors that not only satisfy these rules but also enhance your home - improving insulation, sound proofing and day-to-day operation - whilst maintaining an authentic appearance for many, many years to come.





TIMBER WINDOWS *listed* HELPING YOU... ..ENHANCE & PRESERVE YOUR HERITAGE HOME





True CRAFTSMANSHIP

The Brockhampton Park Estate is steeped in history, built in the mid 1600s and heavily protected with a Grade II listing. In the late 1800s the estate underwent expansion, adding extra buildings such as a carriage house and a game house, with all of these extra buildings eventually becoming residences in the 1990s. One of the portions of the game house within the Gloucestershire manor is now the home of Mr & Mrs Brassington.



Cottage flush casement windows in the shade of 'Oxide Gold' externally and 'Off-White' internally with 22mm true bars, putty glazed and 14mm ultra slim double glazed units.

Under the very watchful eye of Cotswold District Council, the Brassingtons opted to improve their Grade II listed cottage (based on its curtilage to the main house). Such is the level of guardianship over the estate, any application was initially refused until the homeowners were able to demonstrate that a more elegant solution was available from the Timber Windows range when compared to the existing, 1990s-installed windows, resulting in approval of the application.

The fine, true bars and putty finish against the ultra-slim double-glazed unit in our product is a much slimmer solution in comparison to those already installed.

“The windows are lovely. The craftsmanship and quality are excellent; the fitting was also carried out exceptionally well.”

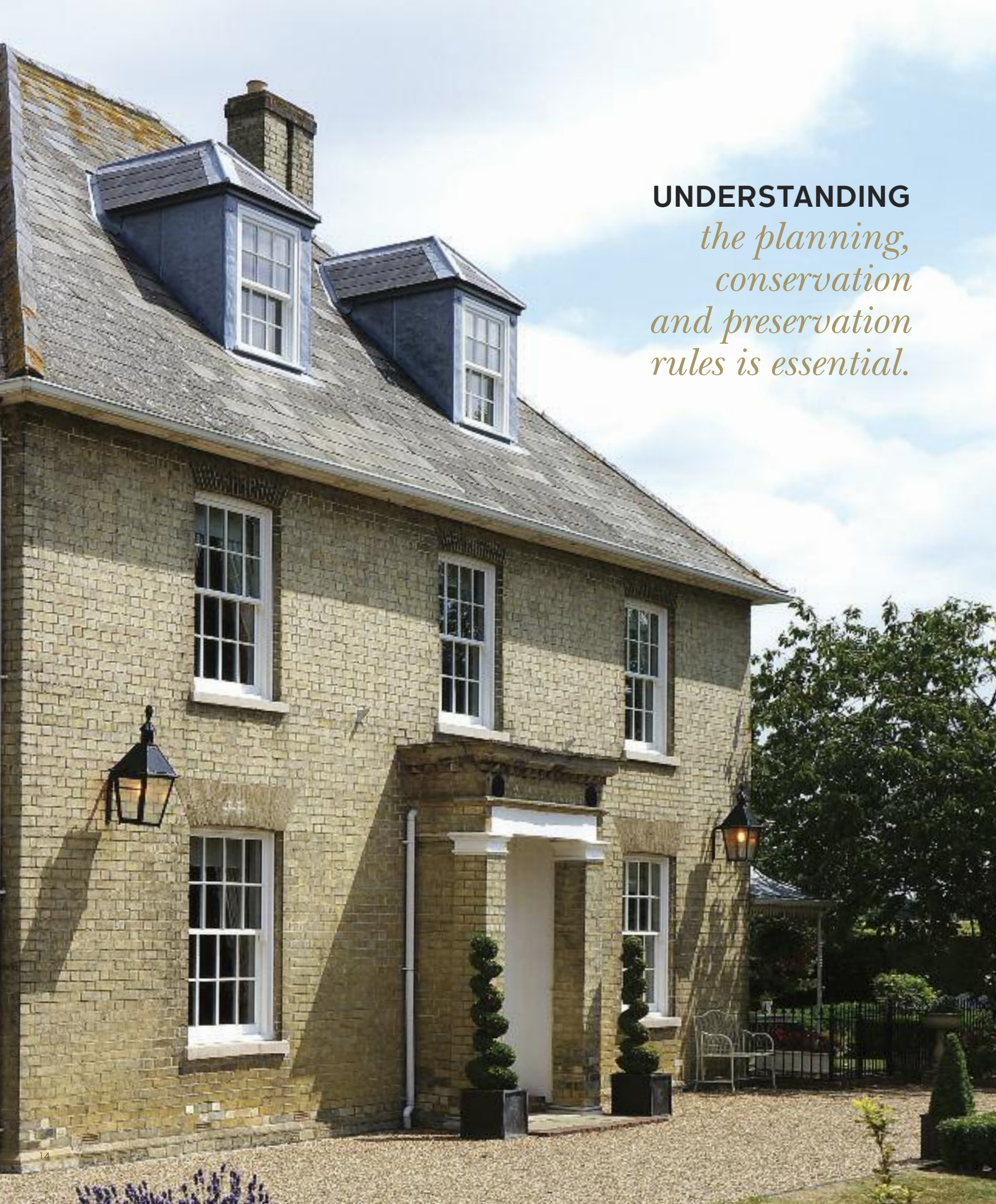
“We’re very happy to be preserving the property. In areas without restrictions, structures tend to get ruined.”

“The putty work is amazing, extraordinarily good.”



Blank Monkeytail handles and pegstays feature throughout all windows.





UNDERSTANDING
*the planning,
conservation
and preservation
rules is essential.*



Historical preservation with **MODERN STANDARDS**

Choosing the most appropriate windows and doors is one of the most important decisions you will make for your home. This is never more poignant than when dealing with properties of conservation and listed status.

Windows and doors are among the most obvious components contributing to a building's style and appearance, so ensuring that these are correct, both from the perspective of aesthetics and regulatory compliance, is vital.

Timber Windows Listed marries preservation of style with exacting methods of construction to produce levels of comfort and convenience that our forebears would envy. The use of engineered timber eliminates twisting, warping and draughts, whilst modern glazing, even in single glazed units, is both warmer and quieter than original glass.

With traditional hand processes and rigorous quality checking, every window and door passes through the hands of experienced, time-served craftsmen. Comprehensive guarantees on every window and door provide lasting peace of mind.





Time honoured skills

OLD MEETS NEW

A meeting of minds – our factory combines state-of-the-art computer controlled machinery with good, old fashioned craft skills – each as important as the other to the overall finish.

With many decades of experience to draw on, the creation of historically authentic windows and doors is the speciality of our highly skilled team.



“With many decades of experience to draw on, the creation of historically authentic windows and doors is the speciality of our highly skilled team.”

All of our windows and doors incorporate the very best glazing, timber and coating technologies to enhance the enjoyment of your period home all year round.

The use of engineered timber ensures that all of our windows and doors will not warp or twist, stick or rub.

Fungal & Insect	Sealed Unit	Hardware	Workmanship	Paint	Stain
30 YEARS GUARANTEE	10 YEARS* GUARANTEE	10 YEARS GUARANTEE	10 YEARS GUARANTEE	8 YEARS GUARANTEE	5 YEARS+ GUARANTEE

* 5 years for 14mm double glazed units. + Not applicable to putty finished products.





Preservation & **PROTECTION**

Gaining planning approval for homes within the heavily protected Yorkshire Dales National Park comes with its challenges, however these have not proved unsurmountable in specifying the Timber Windows Listed range of windows for Ms Shaw's cottage; a Grade II Listed, 17th Century example, successfully granted permission for our casement windows.

“The detailed, computerised drawings and specifications provided by Timber Windows were a big advantage and made the process much easier when filling in all the forms, as all the information I required was at my fingertips”

Ms Shaw explains.





Cottage flush casement windows featuring 14mm ultra slim double glazed units with krypton gas, 22mm true bars and putty glazing, externally finished in the shade of 'Dorset Cream' and internally in 'White'.

Our ultra-slim 14mm double-glazed units were permitted in replacing single glazed windows.

“In an area where even the sheds and greenhouses in your garden require planning permission, as you would expect, the planning officers were diligent in checking the details of bar style, putty finishing and bar placement, and yet our application sailed through in just 8 weeks.”

“We’re happy to live in a conservation area and that our home has the listed status, as we’re ensuring its preservation now and in the future. In terms of the windows, apart from the vastly improved aesthetics, we’re pleased to no longer have to use the shutters to keep warmth in nor having to clean off the regular build ups of black mould and condensation.”



Ironmongery options selected as Black period iron style 'Avon' handles and pegstays.





WHY TIMBER WINDOWS *listed...?*

Finding a local craftsman to repair your period windows may appear an appealing solution - but you may finish up with windows with so many repaired elements, there is little of the "original" left.



TIMBER WINDOWS OFFER A *complete* SERVICE

An endless cycle of repair

Rather like the story about grandmother's broom - where the original brush and handle had both worn out and been replaced - listed window repair can have similar issues.

Rotten wood carefully removed, only to be filled with plastic filler, cracked glass panes replaced with heavier modern glazing leaving sash windows closing by themselves, modern putty and seals installed... the windows may look the same once painted, but inevitably their appearance and functionality will not last for long.

With an endless repair cycle - repairing the repair - inevitably little of the original window is left. Original solid wood frames will also continue to warp, swell, twist and stick.

Replacement where permitted

Where replacement is agreed, the Timber Windows Listed Collection can provide virtual like for like alternatives.

Years of research, examining the nuances of period window and door design and construction, has resulted in a range that has already satisfied planning departments in some of this country's most desirable historic areas.

The authentic appearance is achieved using engineered timber which is stronger, longer lasting and guaranteed to remain a perfect fit whatever the weather. Our glazing options will provide better insulation and sound proofing, whilst the paint is applied in a closely controlled environment to ensure quality and consistency.

Continual development and innovation mean our Listed product range will suit an extremely wide variety of British property types and historic periods, no matter how grand or modest.



BUILT FROM THE FABRIC OF HISTORY



Nestled deep in the countryside is this spectacular mansion steeped in history. With origins dating back to the 16th century, the wooden structure of the house is said to have been constructed using beams of a battleship donated by King William III following defeat of the Spanish Armada.

Having moved in two years ago, the house is now owned by Mr & Mrs Burke who have undertaken a major refurbishment project to return it to its former glory following years of neglect.

“The old windows were beyond repair and didn’t open; it’s good to be able to open the windows now.” Mr Burke says.

In total, 49 windows and doors have been fitted including flush casements, a circular window, French doors and an entrance door, all finished in Off White. The magnificent arched solid wood door remains in its rightful place.

Regarding the installation, Mr Burke comments, *“The fitting team were great, we didn’t even need to redecorate, nor did we have to do any touching up.”*

Overall the reaction has been extremely positive. *“We’re really pleased with them, particularly in the kitchen where they’ve let a lot more light in. We’re very lucky to live here in this amazing setting.”*

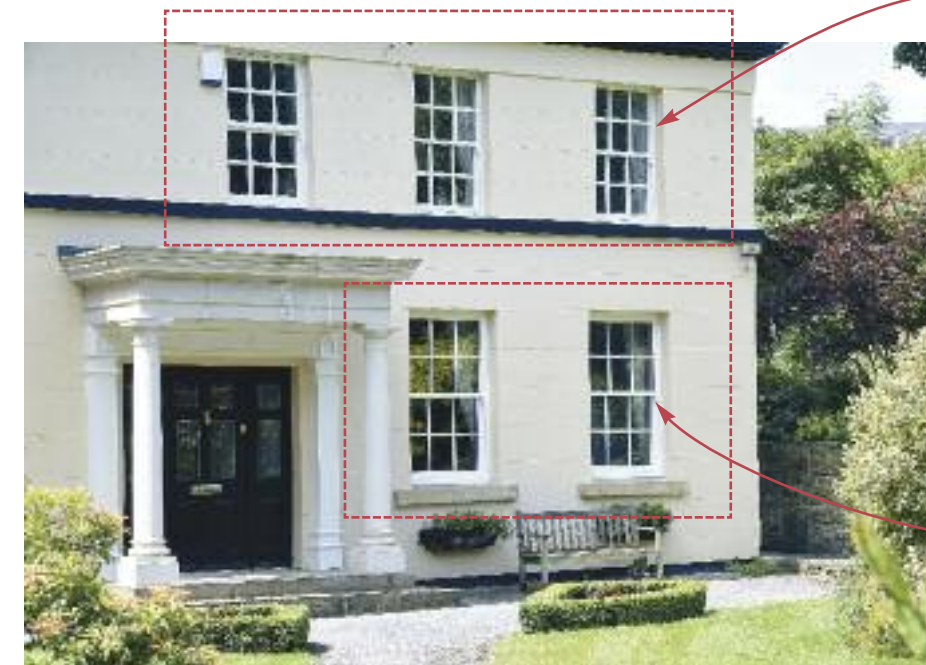


SIGHTLINES

Providing balance & visual impact



WE ARE *expert* WINDOW MAKERS



Existing replacement windows, Note: the thicker through bars, and incorrectly sized meeting rails and bottom rails

“With an eye for detail we can match your old windows, true to the originals with added endurance & longevity”

New replacement Sash windows by Timber Windows, Note: The thinner through bars, true to the originals

Well-thought out sightlines can make all the difference to the visual impact of your property. Wherever possible, the horizontal lines formed by window bars should match up across the windows and doors of the property. The annotated illustration opposite shows this design 'trick' more clearly.

This works particularly well for double-fronted houses with central front doors, but can also smarten semi-detached and terraced homes considerably, bringing balance and elegance. We can also ensure that any non-opening (or dummy) sashes are in-line with those that do open.

Whilst grand buildings - especially from the Georgian and Victorian periods - conjure this design feature effortlessly, the good news is that your local Timber Windows showroom will include this as part of your project, advising on how best to bring balance to the look of your home's new windows and doors.

There is one over-riding idea to keep front of mind when replacing windows in a listed home - they must be "sensitive" to the age, construction and appearance of the original building.

The proportions of timber, meeting rails and glazing bars, along with correctly specified glazing are all important considerations in referencing existing and original windows to replicate the details wherever possible.

All too often we arrive to find previous replacement windows that are anything but "sensitive", especially with regard to the frame depths and through bars.

Overly heavy and far too wide, these can all too easily spoil the appearance not just of the windows, but on the home itself.

The annotated image above shows just what can happen, but with expert guidance, especially from your planning officer and Timber Windows showroom, these issues can be avoided.



BLAZING *a Trail*



Flush casement windows finished in 'Off-White' featuring 14mm ultra-slim double-glazed units with krypton gas, along with 22mm true bars and putty glazing.



Ironmongery options selected as Black Peardrop handles

As the first one of his row of terraced, 1820's cottages to attempt to change the windows, Mr Newby's recently refurbished home has drawn much attention from interested neighbours.

The Harewood House estate workers cottages were designated a Grade II listing in the 1960s to give them a protected status.

"Leeds City Council set out very clearly, the parameters of what would or wouldn't be permitted. They informed me that the Ultra-Slim 14mm double glazed windows would be permissible, so I was able to make my application on this basis" explains Mr Newby.

Planning consent was required for all changes to the property, even those to the rear of the property, much to Mr Newby's surprise.

"The showroom team were great, and excellent to deal with, offering very helpful advice"

Admiration for the new windows has come from all quarters, *"Passers-by and neighbours have been admiring them; the neighbours have a particularly keen interest and one has already had a quote to make the same changes."*

"With a fairly major road out the front of the house, I have really noticed the reduction in noise too."





Glazing options



4mm single glazed.



14mm ultra slim unit with krypton gas.



24mm with argon gas/18mm with krypton gas high performance units.

(Diagram shows 24mm unit)



GLAZING MATTERS



“Of crucial importance to the acceptability of newly crafted windows and doors in historic settings, is the specification of glazing.”

Of crucial importance to the acceptability of newly crafted windows and doors in historic settings, is the specification of glazing.

Referencing existing buildings and local style of fenestration is the key to closely replicating window and door design.

Through bars and putty glazing are bespoke elements that set our Listed range apart.

The range carries a number of glazing options to suit everyone's requirements from a conservation and a lifestyle stand point in terms of specification, giving the required aesthetics while regulating heat effectively and vastly improving sound insulation.

The 4mm single glazed pane and the ultra slim double glazed 14mm unit filled with krypton gas are hand finished with a traditional style putty and are available with a 22mm wide glazing bar, all features designed for the most stringent planning areas.

Our high performance 24mm or 18mm double glazed units, filled with argon gas and krypton gas respectively have the option of either an 18mm or 27mm wide glazing bar, ideal where regulatory restrictions are less rigorous.





Elegantly styled

SASH WINDOWS

Timber Windows' Listed sash windows are made to order in styles to enable sensitive replacement in a wide variety of period homes.

Our beautifully designed sash windows replicate closely the details found in original windows of characterful period homes across the country.

Our sash windows are hung on traditional cords, pre-stretched to accommodate the weight of the glazed units, along with smooth running chains also being an option.

Sash windows are available hand finished in hundreds of heritage paint shades.

A range of authentic ironmongery such as D-handles, fasteners, lifts and other accessories are available in a collection of appearances providing the finishing touch to the styling of your windows.



History REPEATED



Set in 600 acres of farm land in the West Yorkshire countryside, Mr Laybourn's perfectly formed home has had a rich and varied history. The building's origins are as an orangery to a manor house that once stood nearby, providing a bright environment to cultivate produce for use on the estate. Much later, the structure was used as a chicken shed with the window openings bricked up before finally falling into a state of disrepair.

"As the structure is a listed building, I had extremely strict hurdles to overcome and eventually managed to convince the council that the building was better preserved being used as a residence than falling apart. Olly from Timber Windows at Harewood played a big role in the process of gaining permissions by demonstrating the authenticity of the products I wanted to use,"

Mr Laybourn explains.



The building's origins are as an orangery



The new sash windows had to match the style and formation of the glazing bars from the original windows, the frames of which were still present once the openings were revealed.

The façade of the building is dominated by the towering windows and door, the sashes standing at almost three metres high and their appearance arguably plays the most important part in the overall look.

Mr Laybourn explains his delight at their arrival during the lengthy project. *“The day the windows went in was the best day of the whole project as it signalled the transition from a hollow barn to my future home.”*

Finished in a soft shade of Cream, the door and windows are all manufactured in engineered European redwood and also feature authentic astragal bars. The sashes are hung on attractive brass chains and weights.

“We were amazed at how good they were. The products have been in place for over two years now and haven’t weathered at all.”



Much later, the structure was used as a chicken shed!

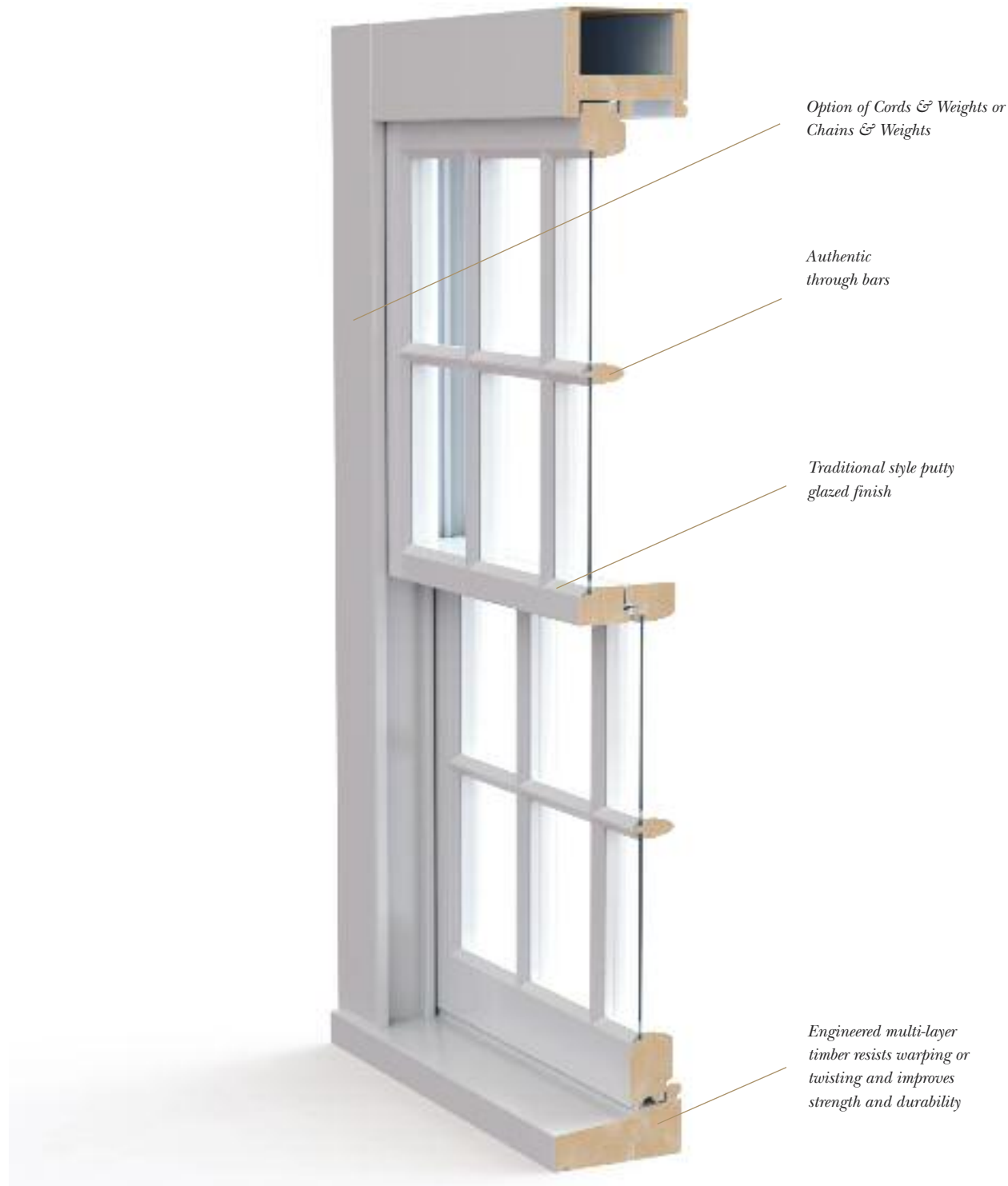


“AS A LISTED BUILDING, I HAD EXTREMELY STRICT HURDLES TO OVERCOME BUT WE SUCCESSFULLY DEMONSTRATED THE AUTHENTICITY OF THE WINDOWS I WANTED TO USE”





Traditional sash window with 4mm single glazing











Grade II Listed, a conservation area, an original structure on a historic site, wishing to change window designs and situated within the boundary of a National Park; it would possibly be expected that the odds were stacked against approval, however Mr and Mrs Toogood successfully gained agreement for their new, sympathetically styled windows and door.

DESIGNED FOR APPROVAL

Originally a cow shed, dating to the 1670s, the building's large arched window, harks to its use as a doorway for the carts. The building was given listed status based on its age and being one of just three original structures in the area.

Mr & Mrs Toogood explain *"the house was freezing previously, the windows were poorly fitted and had various makeshift solutions to plug holes or keep them closed – we didn't know what would be found once the installation started; the team did an excellent job of the fitting."*

"Having the drawings and specifications from the Timber Windows system was excellent for demonstrating all the information to the planners."

The absence of glazing bars in windows often makes the process slightly simpler in planning terms and as was the case here, the homeowners were able to gain approval for 18mm double glazed units in some of the items.

"The house already feels a lot warmer and throughout the recent winter, the heating was used far less."



Slim sash windows, flush casements and cottage casements all finished in 'Tent Grey' and manufactured in Engineered Meranti Hardwood featuring 18mm double glazed units and 4mm single glazing also.

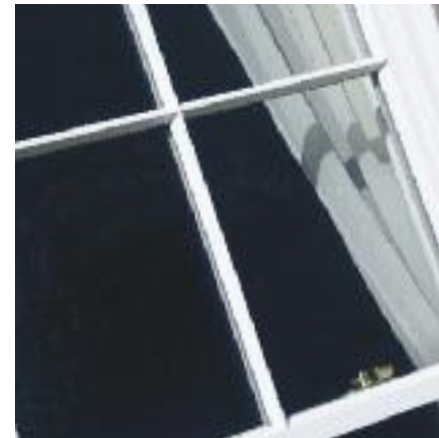


Custom shape Chalfont front door design finished in 'Tent Grey' featuring Etched Sun glass, accessorised with Bronze letter plate, handle, knocker and escutcheon from Samuel Heath.



It's all about the **DETAIL**

“An impressive range of traditional hardware to suit your listed project, together with options & finishes can be seen in our showrooms”



Fungal & Insect	Sealed Unit	Hardware	Workmanship	Paint	Stain
					
30 YEARS GUARANTEE	10 YEARS* GUARANTEE	10 YEARS GUARANTEE	10 YEARS GUARANTEE	8 YEARS GUARANTEE	5 YEARS+ GUARANTEE

* 5 years for 14mm double glazed units. * Not applicable to putty finished products.



Traditionally styled

CASEMENT WINDOWS

Styled specifically to satisfy the requirements of conservation and planning regulations when replacing period casement windows, our Listed Casement range vary in their features and details depending on the local and geographic requirements.

The 4mm single glazed pane and the ultra slim double glazed 14mm unit filled with krypton gas are hand finished with a traditional style putty and are available with a 22mm wide glazing bar, all features designed for the most stringent planning areas.

Our high performance 24mm or 18mm double glazed units, filled with argon gas and krypton gas respectively have the option of either an 18mm or 27mm wide glazing bar, ideal where regulatory restrictions are less rigorous.

Our casements are available in different styles to suit different situations.

The flush casement closes into the frame giving a flush finish across the face of the window. This simple yet elegant design can be found in most mediaeval buildings, cottages and houses of all periods.

Specially designed sections are added to the front face of the window to create our Deco casements, which allow the opening sashes to appear recessed within the frame. An important detail common to the inter-war period of the 1930's, the stepping back of the sashes provides a degree of modelling to the façade of urban homes.

Through the use of slimmer sections and designing out the need for vertical mullions, the Cottage flush casement allows approximately ten percent more light into the building, ideally suited to traditional cottages and the replacement of their smaller, finely constructed original windows.

A variety of arched and shaped windows, including gabled and triangular frames, are also available.

Casement Windows are available hand finished in hundreds of heritage paint shades, whilst a choice of traditional ironmongery in a range of finishes help to complete the windows.





IMPROVING A CLASSIC

When Mr & Mrs Cutler decided it was time to update their 400 year old cottage sitting within a conservation area village near Coventry, they thought they had found the right supplier of windows and doors in Timber Windows, but wanted to see how we performed. *“The front door was ordered on its own to begin with by way of a test of both the product and service.”*

Satisfied with their new door, the Cutler's returned six months later to replace the windows and other doors throughout the house. *“We must have wooden windows in this property; the original houses in the village have a special designation to preserve them. Our old wooden windows were failing all round and we recognised we could do much better now.”*

“THE ORIGINAL HOUSES IN THE VILLAGE HAVE A SPECIAL DESIGNATION TO PRESERVE THEM”



The new front door is a Norham design finished in Oxford Clay with a French Grey frame and is dual coloured with a White finish internally. The door features Queen Anne decorative glass along with chrome ironmongery. *“We feel the windows and doors now suit the house much better in colour terms, and have attracted many nice comments from passers-by.”*

The flush casement windows, French doors and stable door are all finished in French Grey externally and White internally, with a fine horizontal astragal glazing bar to the windows. *“The fitting team carried out a very tidy job and finished it off beautifully. The noise and weather proofing is greatly improved and we love the stable door; it's very practical with the dog and provides a nice connection to the garden.”*





Note: leaded designs are only available with our high performance double glazed 18mm and 24mm units.





Note: leaded designs are only available with our high performance double glazed 18mm and 24mm units.







14mm ultra slim double glazed casement window



Modern HERITAGE





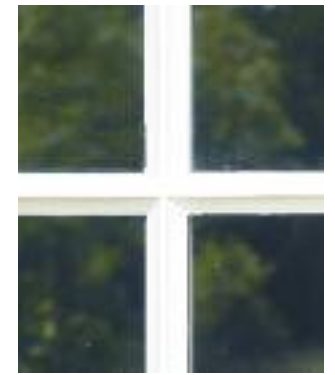
With origins to the mid 1700s, Mr & Mrs Whelan's Cambridgeshire home was desperately in need of changes to make their living conditions more comfortable, "some of the windows were believed to be the originals, with thin picture glass, all having had numerous repairs and the addition of secondary glazing, however it had come to the point where there was nothing further that could be done to maintain these" they describe.

The owners wished to replicate the original cottage style design, as well as have the benefits of a modern window, "It was good to be able to visit a showroom, and to have a pressure-free overview of the available options. The quotes included a few options to consider; the information was all patiently provided, and the home visits were extremely helpful."

Cottage casement windows were chosen in the shade of "Off-White" with 22mm true bars, 14mm ultra slim double glazing and authentic putty glazing.

"The fitting team were extremely good with a high level of attention to detail".

"The putty glazed windows sit very well with the exterior of an old property, and it is a delight not to have the secondary glazing. The standard of the paint finish looks almost miraculous compared with what was there before; a huge improvement.



Cottage flush casement windows finished in "Off-White" featuring 22mm true bars, putty glazing and 14mm ultra slim double-glazed units.





It's all about the **DETAIL**

“Traditional hardware in an extensive range of finishes helps complement every project perfectly.”



With an extensive range of handles, pegstays and locking pins, we will help to ensure that your casement windows are both easy to use and maintain their listed appearance.

We offer a wide choice of finishes including chrome, black, polished brass, satin chrome and antique pewter. Our Samuel Heath range delivers exquisite quality and inspirational designs.

Fungal & Insect	Sealed Unit	Hardware	Workmanship	Paint	Stain
					
30 YEARS GUARANTEE	10 YEARS* GUARANTEE	10 YEARS GUARANTEE	10 YEARS GUARANTEE	8 YEARS GUARANTEE	5 YEARS* GUARANTEE

* 5 years for 14mm double glazed units. * Not applicable to putty finished products.





Authentically styled

FRENCH DOORS

Practical yet beautiful, the Timber Windows range of French Doors can enhance both your home and lifestyle, providing easy access to outdoor spaces.

Authentically styled, these doors offer the flexibility of opening inwards or outwards, with either door designed to open first.

The 4mm single glazed pane and the ultra slim double glazed 14mm unit filled with krypton gas are hand finished with a traditional style putty and are available with a 22mm wide glazing bar, all features designed for the most stringent planning areas.

Our high performance 24mm or 18mm double glazed units, filled with argon gas and krypton gas respectively have the option of either an 18mm or 27mm wide glazing bar, ideal where regulatory restrictions are less rigorous.

Constructed to the same exacting standards as our windows, with timber guaranteed for decades, our French Doors incorporate a host of technical innovations for absolute peace of mind.

The following pages show how our French Doors have added flexibility and elegance to a variety of homes.









ENGINEERED TIMBER TRADITIONAL WOOD

MAKING THE RIGHT CHOICE

Traditional wood is both beautiful and tactile, the natural choice for windows and doors in some of this country's most beautiful and historic areas. However traditional wood has innate problems - a natural tendency to expand and contract, and when wet, to warp in the direction of the grain resulting in windows and doors that twist and stick, causing frustration for homeowners.

Engineered, or multi-layered timber, is an innovative solution that counteracts these issues. It is created by layering wood sections, with the grain of one section of wood layered in the opposing direction to the grain of its neighbour.



STRONGER & LONGER LASTING

As wet wood has a tendency to warp in the direction of the grain, layering the wood in this way ensures that any movement caused by the absorption of moisture is evened out. So engineered timber is stronger, longer lasting and resistant to the issues that affect traditional wood. Windows and doors made with engineered timber retain their strength and structure, ensuring that they remain a perfect fit, just as they did on the day they were installed.

Using engineered timber ensures that there is no warping or twisting, sticking or rubbing, no matter how damp the prevailing atmospheric conditions. This makes it the perfect choice for every area of the UK - no matter how exposed the location.

FINISHED BY HAND

Engineered timber is also far easier to work with. It can be used to meet the design specifications of complex windows and doors much more efficiently than solid wood, yet retaining all of its natural appeal. And whilst state of the art computer controlled machinery inevitably plays its part, all of our engineered timber windows and doors are hand finished before being subjected to rigorous quality control, with every aspect of the construction and glazing fully checked and re-checked..

So put us to the test - visit one of our Timber Windows showrooms and see for yourself how timber has changed.





 A map of the United Kingdom, including the Channel Islands, with 42 numbered tree icons indicating the locations of Timber Windows showrooms. The map is light blue and white, with the tree icons in a golden-brown color. The word "London" is written in a serif font in two locations on the map, corresponding to the 13th and 40th showroom locations.

THE REASSURANCE OF DEALING WITH A *local* SPECIALIST

42 STUNNING SHOWROOMS NATIONWIDE

The Timber Windows service is delivered with care by knowledgeable local specialists whose reputation is built on providing an attentive service from initial enquiry to the completion of your project.

WHAT TO EXPECT

Our local showrooms provide the perfect environment to browse the many options available, with expert guidance on hand to help you make an informed decision.

Showrooms

1. Amersham
2. Bournemouth
3. Blandford
4. Caterham
5. Cardiff
6. Carmarthen
7. Channel Islands
8. Cheltenham
9. Cirencester
10. Clifton (Bristol)
11. Colchester
12. Denbigh
13. Dulwich
14. Esher
15. Farnham (Bury St Edmunds)
16. Guildford
17. Harborne, Birmingham
18. Harrogate
19. Hartley Wintney
20. Heathfield
21. Henley on Thames
22. Hereford
23. Highgate
24. Honiton
25. Hordean
26. Horsham
27. Ingatestone
28. Knutsford
29. Leamington Spa
30. Lincoln
31. Moreton-in-Marsh
32. Olney
33. Oxford
34. Ripley
35. Salisbury
36. Sheffield
37. St. Albans
38. Tavistock
39. Tunbridge Wells
40. Wimbledon
41. Winchester
42. Woodbridge



OUR SHOWROOM TEAMS ARE *experts* IN THE SPECIFICATION OF OUR WINDOWS & DOORS

local SHOWROOMS, *local* EXPERTS!

Every Timber Windows showroom has comprehensive displays of many door and window designs, architectural hardware and accessories, including those from our exclusive Samuel Heath range, all beautifully presented with the high standard of manufacture and finish clearly visible.

Our showroom teams are experts in the specification of our windows and doors, and are happy to offer you the benefit of their expertise and experience in a completely unbiased way.

Through extensive customer case studies they will also be able to demonstrate a variety of completed projects and real customer reactions.

FIND YOUR NEAREST TIMBER WINDOWS

SHOWROOM ONLINE AT

www.timberwindows.com/showrooms

OR CALL 0845 652 7300

We look forward to welcoming you soon!





BEAUTIFUL, HAND-MADE
TIMBER WINDOWS & DOORS

T: 0845 652 7300

www.timberwindows.com




TIMBER
WINDOWS
- LISTED -

BEAUTIFUL , HANDMADE
TIMBER WINDOWS & DOORS

T: 0845 652 7300

www.timberwindows.com

